

**Year 3/4 ~ Art
Tudors**

We will be using DT and Art to explore the houses daily lives and culture of the Tudor people, involving designing a Tudor-style house and studying Tudor portraits.

Key Learning:

- Use thin and thick brushes to produce shapes, textures, patterns and lines.
- Use watercolours to create thin washes before adding detail
- Create moods with different colours.
- Comparing and contrasting features of an earlier time period to the modern day.
- Using a range of historical evidence to ask questions and make conclusions
- Design, make and evaluate a structure/model based on a Tudor template

Key Vocabulary:

DT:
Design
Measure
Construct
Evaluate
Art:
Tone
Texture
Hatching & Cross Hatching
Mix
Wash
Perspective
Portrait

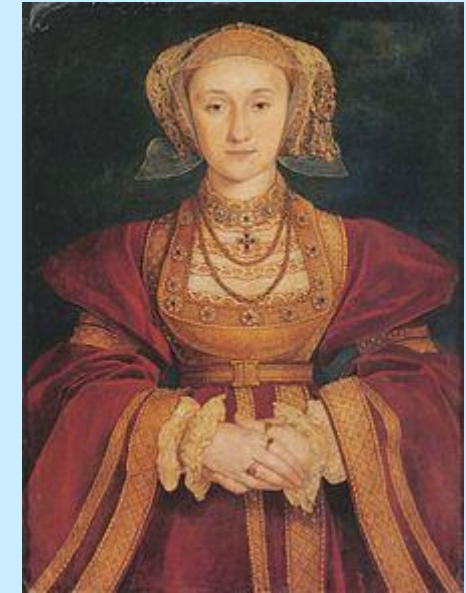
Key People:

Henry VIII & Wives
Elizabeth I
Sir Walter Raleigh
William Shakespeare
Christopher Columbus
Hans Holbein

Cultural links:

Paintings
Hierarchy
Theatre/Performance
Exploration
Music

An example of a Tudor portrait:



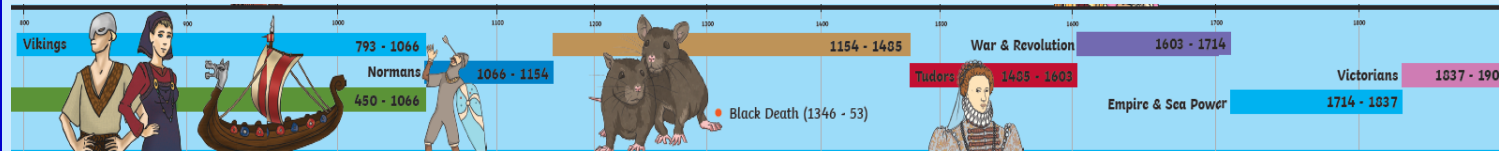
Big Question:

What was life like in the age of Tudors?

Web links:

<https://www.nationalgallery.org.uk/>
<https://www.nationaltrust.org.uk/blickling-g-estate>
<http://www.primaryhomeworkhelp.co.uk/Tudors.html>

Timeline:



Key Places:

Hampden Court Palace
Greenwich Palace
Tower of London
Blickling Hall
Oxborough Hall
Stranger's Hall
Elm Hill & Tombland

